



ECO HYDRONIC SYSTEMS



- Heat Pumps
- Radiators
- Towel Warmers
- Underfloor Heating
- Gas Boilers
- Pumps
- Valves
- Expansion Tanks
- Thermostats
- ThermaSkirt



Eco Hydronic Systems - A Division of Australian Hydronics P/L



ECO HYDRONIC SYSTEMS

CONTENTS

About Us & Our Brands.....	02
Hydronic Heat Pumps.....	03
Gas Boilers.....	04
Horizontal & Vertical Radiators.....	05
Towel Rails & Designer Radiators.....	06
ThermaSkirt Heating.....	07
Trench Heating / Convectors.....	08
Underfloor Heating.....	09
Radiator Valves & Accessories.....	10
Thermostats.....	11
Pumps / Expansion Tanks / Fluid Management.....	12
Domestic & Commercial Hot Water Heat Pumps....	13
Domestic & Commercial Hot Water Heat Pumps....	14
Solar Power & Evacuated Tubes.....	15
Underslab, Ceiling, Floor, Wall and Insulation.....	16
Solar Hydronics.....	17
Increase your home's value.....	18



About Us & Our Brands

Eco Hydronic Systems are focused on providing you with a hydronic system that ensures the year-round comfort and fuel efficiency of your home or business.

These systems are aimed at reducing your energy consumption, saving you money and reducing your carbon footprint. They provide you with health benefits by minimising dust and irritants and reducing the risk of allergies and asthma.

This is achievable as we stock an extensive range of the best products from Europe's and Australia's most progressive manufacturers, backed up by industry leading warranties and manufacturer support.

Our hydronic experts provide advice on products, system design, installation, servicing and maintenance so you can achieve the ultimate results from your system.





HYDRONIC HEAT PUMPS



RHEEM THERMAL



- › Heating capacity from 10kW to 68kW Delivery
- › Temperature of 40°C and up to 65°C
- › Ambient air operating range between -5°C to 45°C
- › Rheem IQ® digital intelligent control
- › Acoustic lined compressor compartment
- › Primary circulation pump housed within case for ease of installation
- › Full commercial construction including marine grade aluminium case
- › Anti-corrosion treatment of the evaporator coil
- › Compressor soft start to all models
- › Proudly Manufactured in Australia
- › Full manufacturer's warranty and factory/service support nationally
- › Designed for Australian conditions including cool climate operation

- › Internal and external models available for heating and cooling.
- › With energy efficient inverter technology for high flow temperatures even on cold winter days
- › Suitable for densely built-up areas thanks to low operating noise
- › Particularly quiet night mode
- › High energy efficiency class A++, even at a flow temperature of 55°C
- › Perfect fit for the standard Australian family home
- › Made in Germany with premium quality parts
- › Energy efficient operation delivers exceptional COP of up to 5
- › Outdoor installation to harvest energy from the air and turn it into comfortable heat for your home
- › SmartGrid and solar PV ready to integrate in-home energy management
- › Available for Domestic Hot Water.

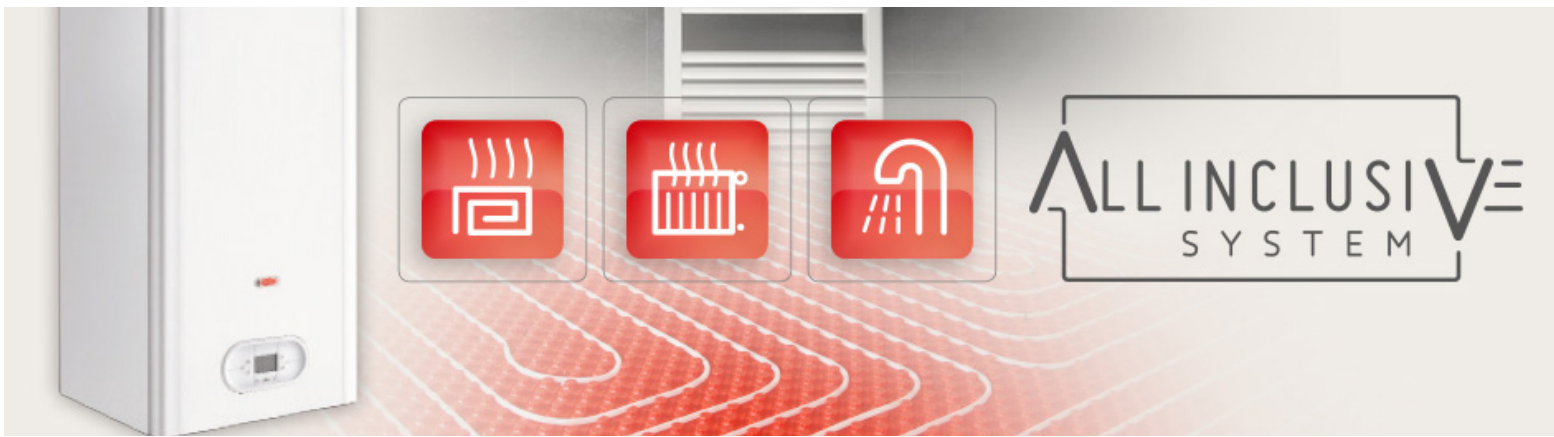
STIEBEL ELTRON



» AMBIENT »



- › Australian made
- › All in one system mains hot water and hydronic heating
- › Super efficient & cheap to run
- › Eco friendly
- › 55db to 64db / Single Phase or 3 phase
- › Integration with PV solar system
- › 2 Year warranty
- › Variable speed heat pump
- › Climate control for your home: you can expect the ultimate experience in comfort, performance and reliability
- › One system can provide all of your home heating, cooling and hot water requirements
- › Available for Domestic Hot Water.



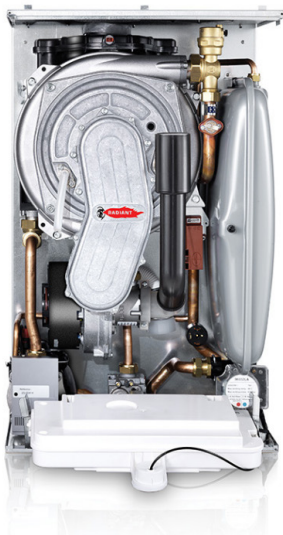
HIGH EFFICIENCY GAS BOILERS



Radiant Hydronic Water Heaters are market leaders in terms of operating efficiency and quality. These European manufactured units feature the patented DUOPASS® SYSTEM technology designed to deliver remarkable flow rates to help ensure efficient and constant hot water supply. The units feature new controls, breakthrough aesthetics, white back-lit displays and a new bottom cover hiding connections. Radiant has gone to the head-of-class offering the world's most efficient boilers with AFUE ratings up to 96%! Our latest products take efficiency to the next level, coupling the advantages of central boiler systems with the ability to specifically control the level of comfort in individual residential or commercial suites via the Cloudwarm® Thermostat & App. Available for IOS and Android.



R1K Heating Only Condensing Boiler



Series: Combi-tech
Heat Output: 25 - 34 - 50 - 75 - 100kW
Banked upto 800kW
Thermal Efficiency: 97.6%

- Heating only boilers
- High Efficiency
- Low Noise
- Compact size and light weight for easy installation
- Available in Internal or External models
- Plastic Casing, ideal for coastal areas



R2K Heating & DHW Condensing Boiler

Series: Combi-tech
Heat Output: 18 - 24 - 34kW
Thermal Efficiency: 97.6%

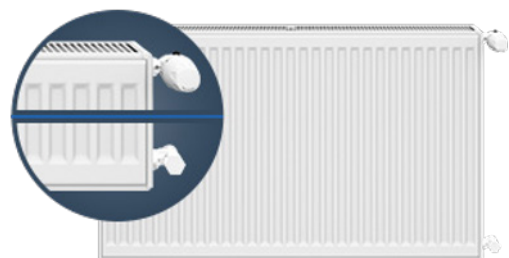
- High Efficiency
- Low Noise
- Compact size and light weight for easy installation
- Available in Internal or External models
- Plastic Casing, ideal for coastal areas



STANDARD RADIATORS



KORADO®



RADI KLASIK



RADI K LINE KLASIK



RADI K PLAN KLASIK



RADI K PREMIUM



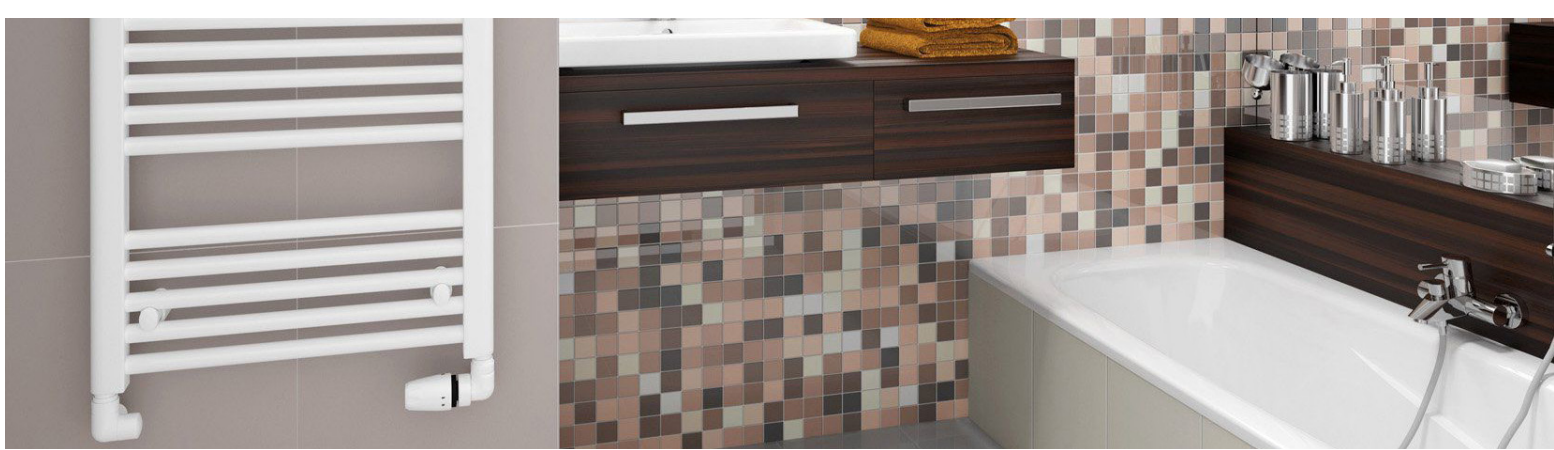
RADI K LINE PREMIUM



RADI K PLAN PREMIUM



- › Intended for heating of homes, apartments office buildings as well as non-commercial spaces
- › Installation in central heating systems with a maximum working pressure of 10 bar
- › Designed for one-pipe or two-pipe heating systems with pressurized and some of them also gravity-fed circulation
- › Suitable also for low temperature heating systems
- › Standard paint finish white RAL 9016, another 11 colours from the KORADO colour card are available on request
- › Special order available in other colours from the RAL colour range



TOWEL | DESIGNER RADIATORS



- › We have access to 100s of designer towel rails and radiators in all shapes and sizes.
- › Imported from leading brands such as Korado, Radox, Varis & Viadrus
- › Many items available to custom order to your specification in length, height, type and colour.
- › Huge range of designer valves and fittings to suit
- › Korado Koralux Linear Klasik & Exclusive (Chrome) offer great value for money due to high heat outputs and lower cost.

KORADO®

RADOX

VARIS

VIADRUS



THERMASKIRT

ThermaSkirt™

The Skirting board that heats your home. ThermaSkirt combines the heating and skirting into one cost effective, space saving & energy efficient package. Manufactured in the UK from robust powder coated aluminium, and styled to look just like a traditional or modern skirting profile, it can heat your room in minutes. More than 40,000 systems already installed.



True radiant heat
Minimal air movement and drafts create real comfort



Energy efficient
Even, all-around heat uses less energy yet provides real warmth



Fast and responsive
No under heating or over heating



Simple installation
Installed with minimal disturbance or modification to your home.



Works with any floor finish
Carpet, laminate, timber, vinyl with equal performance



Free up wall space
Create a more spacious and versatile environment

The smart alternative to storage heaters, panel radiators and underfloor heating



Deco BM

- 15mm/4.5" high profile
- simple, stylish square edge profile
- ideal for modern apartments and kitchen plinth heating



Deco BM3

- 170mm/7" high profile
- 3 Pipefor higher heat output



EasyClean LST

- surface design temperature < 43 Degrees
- ideal for new build bedrooms and apartments
- works with any floor construction or finish



TRENCH HEATING | CONVECTORS

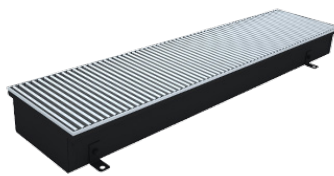
KORAFLEX infloor Trench Heaters



Natural Convection - PK



Fan Assisted - PKOC



Damp environment - PKBOC

KORALINE Free standing Bench Convec-



Koraline Economic



Koraline Exclusive



Koraline with board



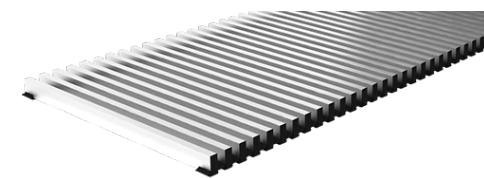
Covergrills / Frames



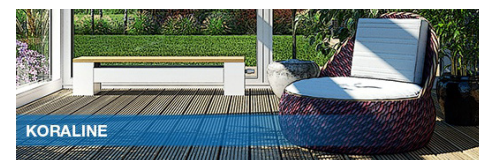
Aluminium



Wooden



Stainless Steel



KORALINE

KORAWALL Convectors

Special Convectors



Korawall WK & WI

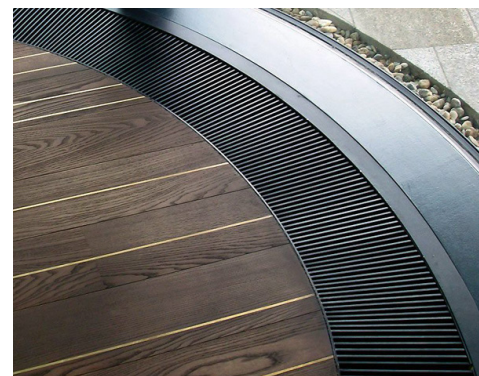


Korabase



Koraspace

- › Low cost operation - fast heat distribution, low power consumption and environmentally friendly
- › Wide range available, designer solutions – for houses, apartments and commercial buildings
- › Solutions for interior, dry, damp and wet conditions
- › Suitable for all energy sources (heat pumps, gas, electricity, solar energy, wood and biomass)
- › Certain models provide heating or cooling by innovative technical solution





HYDRONIC UNDERFLOOR HEATING

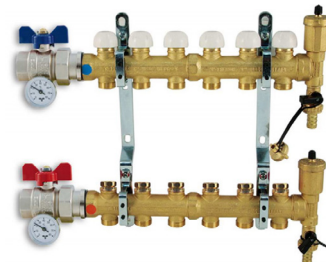
Our underfloor heating can be installed with a large range of floor coverings to provide you with the ultimate comfort. As well as in-slab and in-screed floor, timber and tiled floors are suitable for underfloor heating. Underfloor hydronic heating provides all the benefits with the invisibility of concealed pipes providing an evenly distributed heat.



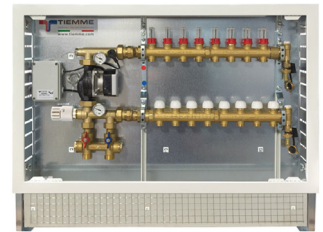
Cobra-Pex Pipe



AL-Cobra-Pex



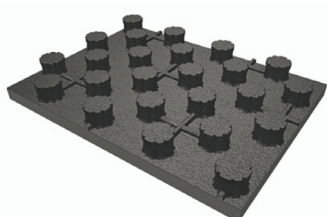
UFH Manifolds



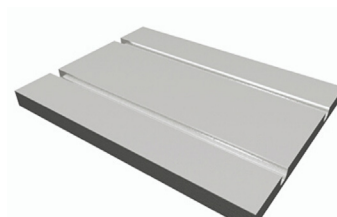
Manifold Cabinet



Slim System Panel



Low Black System Panel



Dry System Panel



Manifold Stands



Support Brackets



Actuators



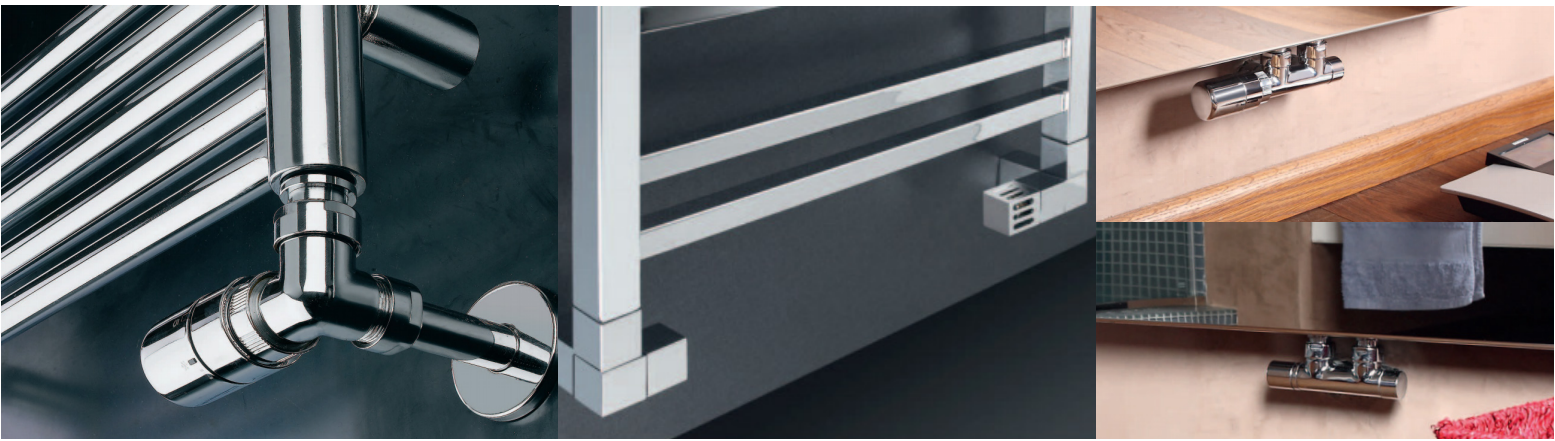
Pipe Fittings



Mixing Valves



Motorised Ball Valves



RADIATOR VALVES

CARLO POLETTI
HeatingComponents&Design

TIEMME
ORIGINAL ITALIAN TRADEMARK

We are able to offer 100s of different radiator valves, lockshields, thermostatic heads, cover plates and pipe covers.

A large range of designer accessories and finishes are available. Below is a small sample of some of the most popular.



B



Chrom
Хром

E



Weiß
Белый

EE



Weiß EE
Белый EE

H



Gold
Золото

R



Chrom, satiniert
Матовый хром

L



Nickel, satiniert
Матовый никель

I



Kupfer, gebürstet
Медь зачищенная

J



Silber, gebürstet
Серебро
зачищенное

M



Bronze, gebürstet
Бронза зачищенная



Thermostats

Siemens REV13



- › 24 hour room temperature controller
- › Automatic mode with one or two heating phases
- › Continuous comfort mode
- › Continuous energy saving mode
- › Automatic modes with time switch program
- › Heating zone control

Siemens RDS-110



- › Remotely monitor and manage your homes temperature and energy usage anytime
- › Equipped with patented self-learning
- › Operation mode switchover contact
- › Remote room temperature sensor
- › Remote humidity sensor

Radiant Smart



- › Large LCD-display
- › Access boiler control panel
- › Trouble shooting capabilities
- › Check and change the set values at any time
- › After installing immediately ready to run
- › Supports anti-frost function

Euroster Q7



- › 9 time ranges per day with any temperatures
- › Possibility to work with two sensors
- › Intuitive temperature setting knob
- › Completely or partially block with a 4 digit pin
- › Memory retention of all settings and ranges
- › Displays current and desired temperatures

Euroster 0101 Smart



- › Built-in WiFi module
- › Control via smartphone or tablet
- › Dedicated mobile application
- › Large screen and intuitive menu
- › Most important functions via control panel
- › Holiday mode

Euroster 4040



- › Readable, backlit e-paper display
- › Simultaneous display of current and target temperatures
- › Controller lock with any 4-digit code
- › Temperature reading with an accuracy of 0.1
- › Holiday mode



..and many other controllers & accessories



› Zone Controllers



› Pump Controllers



› Clamp on thermostats



› More thermostats



Leading Italian manufacturer of electric water pumps.
Discover the range of our circulating water pumps for heating, conditioning, cooling and circulation systems in domestic, civil and industrial fields.

NC3

- › Three speeds circulating pumps with threaded ports.
- › For domestic and commercial systems.

MXHL

- › Horizontal Multi-Stage Pumps
- › Compact and robust construction
- › Universal pump for commercial, domestic & irrigation systems



Imera has a complete range of expansion tanks with replaceable membrane.

- › Expansion tank sizes range from 5 litres to 600 litres.
- › Membrane Expansion Tanks are designed for hot and cold water closed circuit applications.
- › Used to protect closed water systems from excessive pressure.
- › Expansion tank working temperatures are -10°C to 100°C.
- › External tank enamel paint finish is colour RAL 3000 RED.
- › Rubber membrane constructed from EPDM rubber.



Inhibitors, Protectors, Leak Sealers, Cleaners & TF1 Compact Filter
Corrosion inhibitors

- › Safeguard central heating systems against the formation of sludge and scale build-up.
- › Help mitigate the damaging effects of corrosion debris that can cause blockages and boiler breakdown as well as negatively impacting on overall system efficiency.
- › Internal leak sealer is able seek out and seal microscopic holes effectively.
- › TF1 Compact Filter is simple to install and takes up minimal space. The composite plastic filter fits onto vertical and horizontal pipework and works by allowing hydro cyclonic action to deliver contaminants to the unit's powerful magnet assembly for safe removal.





HOT WATER HEAT PUMPS

Evoheat Evo270 - Domestic Hot Water Heat Pump



- › Designed for Australian conditions
- › Save up to 75% on your hot water costs
- › Hot water up to 60°C
- › Air operation range from -7°C to 43°C
- › Extremely energy efficient
- › Simple to install & Sleek Looking
- › Hydro power booster
- › Genus control and built-in timer
- › Vacation mode
- › Won the 2021, 2020 & 2019 hot water ProductReview Award for three consecutive years



Rebates Available
Up to \$3500

Reclaim Energy C02 Range - Domestic Hot Water Heat Pump



- › Easy to install
- › Offering Glass Lined Enamel and Stainless Steel tank options
- › Top down Heat Pump return heating for quick water recovery
- › CO2 refrigerant ideally suited to excel in cold weather conditions
- › CO2 refrigerant naturally environmentally friendly
- › High COP creating high energy from low energy input
- › Whisper quiet operation level at 37 dB
- › Has the ability to heat hot water from as little as \$1 per day
- › One shot boost function for continuous hot water
- › Designed to use excess PV generation rather than exporting it to the grid – control your energy
- › Smart controller allows customers to take control over their energy costs and consumption.
- › Stainless Steel available in tall and squat tank for sub floor installs



Rebates Available
Up to \$3500

Stiebel Eltron WWK Range - Domestic Hot Water Heat Pump



STIEBEL ELTRON

- › German engineered,
- › Market leader in heat pump technology since 1976
- › 220 litre tank with high volume of hot water can deliver 360 L of 40°C shower temperature water at a cold water temperature of 20°C (302 litre tank delivers 540 litres)
- › Suitable for hard or soft water areas with maintenance free current impressed anode
- › Can be installed outdoors or indoors, indoor installation requires 13m3 of clear space
- › Single piece design for ease of installation
- › Active defrost function to assist operations in cold climates
- › Operates in cold climates down to minus 5°C
- › Energy efficient operation saves up to 75% on hot water energy use*
- › Low power draw at only 2.3 Amps



Rebates Available
Up to \$3500



HOT WATER HEAT PUMPS

Mitsubishi - Q-TON: Commercial CO2 High Efficiency Hot Water Heat Pump



WHAT IS Q-TON?

Q-ton is an air-to-water heat pump which utilises patented compressor technology and CO2 gas as a refrigerant to offer a reliable and efficiency hot water solution for a range of commercial applications.

PERFORMANCE

-25°C → 90°C

90°C water supply even in extremely cold regions with temps as low as -25°C

CAPACITY

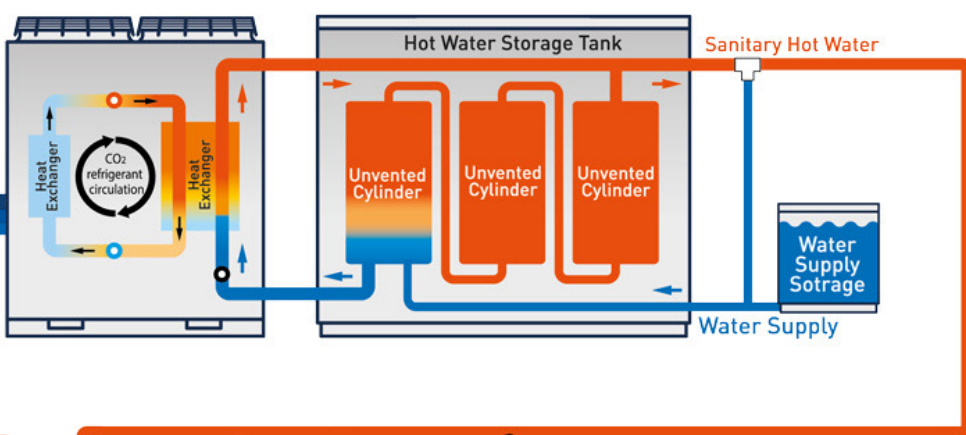
-7°C → 100

Keeping 100% capacity down to -7°C

EFFICIENCY

COP 4.3

The industry's highest COP level COP4.3 (intermediate season)



- High Performance
- High Efficiency
- Environmentally Responsible
- Easy Operation
- Long Term Reliability

HOW DOES Q-TON WORK?

The Q-ton heat pump uses a coil of cold refrigerant that absorbs 'free' heat from the outside air, and a 2-stage compressor that puts the refrigerant under high pressure in order to raise its temperature. An on-board heat exchanger uses heat from the refrigerant to generate hot water from 65°C to 90°C which is then stored for sanitary use.

Systems can be set up to meet specific requirements, from one 30kW Q-ton unit providing 6,000 litres of hot water a day, to 16 heat pump units in a modular configuration of 480kW, connected to substantial hot water storage tanks. A touch screen controller makes the system simple to operate, while the user-friendly graphic display enables you to easily monitor hot water production and availability.

WHAT ARE THE COMMERCIAL APPLICATIONS?

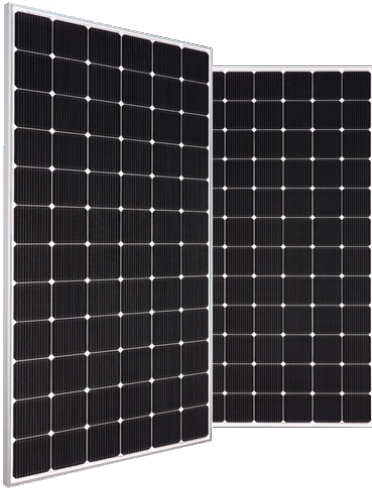
The Q-ton high efficiency heat pump offers a reliable hot water solution for a range of commercial applications. The Q-ton is best suited to applications that use between 3,000 and 20,000 litres a day.



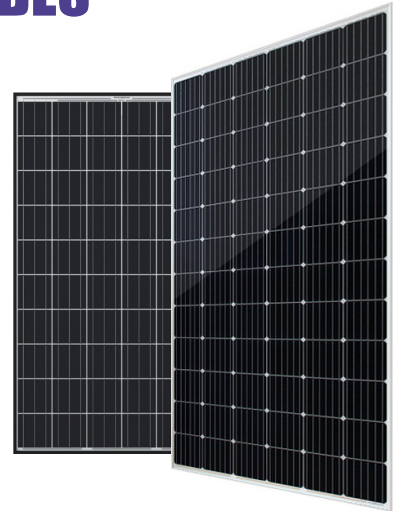
- Laundries
- Hotels
- Food Processing
- Gyms
- Manufacturing
- Hospitals
- Education
- Aged Care
- Restaurants



SOLAR PV & EVACUATED TUBES



LG - SOLAR PANELS



Q-CELLS - SOLAR PANELS

Our Eco Energy Systems division offers market leading solar products and services. If you choose us for your solar system you can guarantee yourself the latest smart interactive technology, a system that will pay itself back and consecutive international award winning products to make up your system! For more information visit our website and head over to the learning hub.

Solar PV Inverters



Fronius Symo



Fronius Primo



Solax Hybrid



Sungrow Hybrid

Solar Power Battery Storage



Tesla Powerwall 2



LG chem RESU

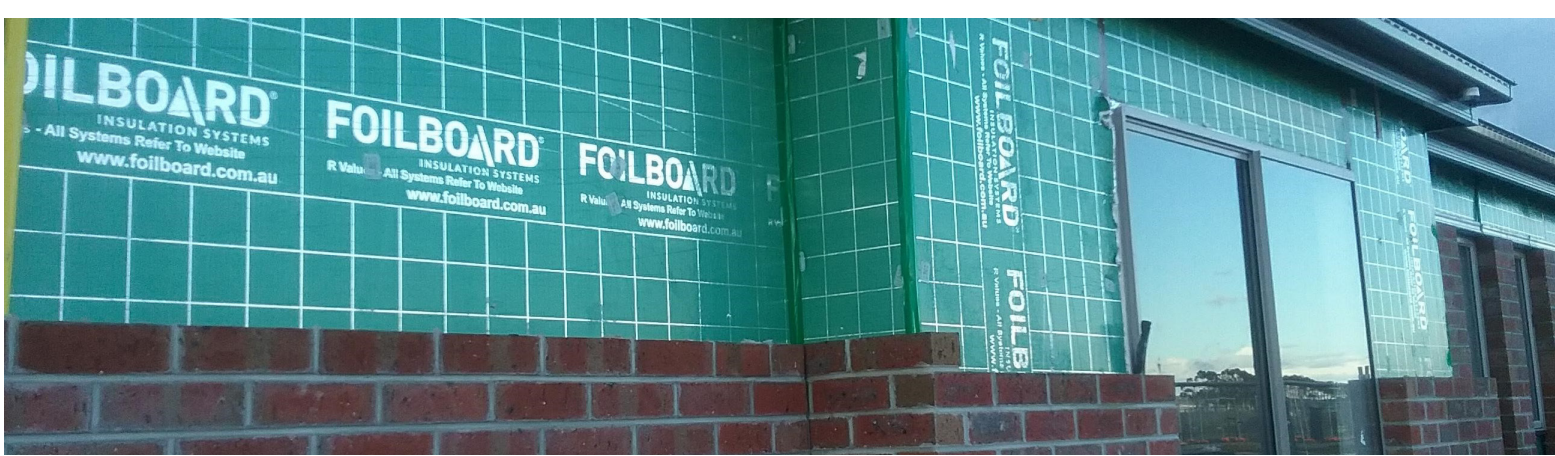


Sungrow Powcube

Evacuated Tubes



Solar Evacuated Tubes

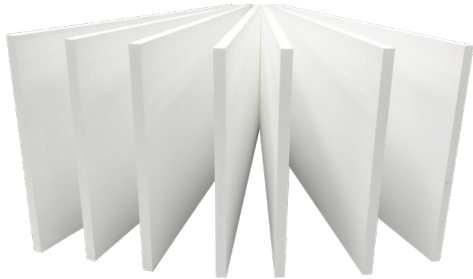


INSULATION

FOILBOARD®
INSULATION SYSTEMS

SLABMATE

Slabmate by Foilboard

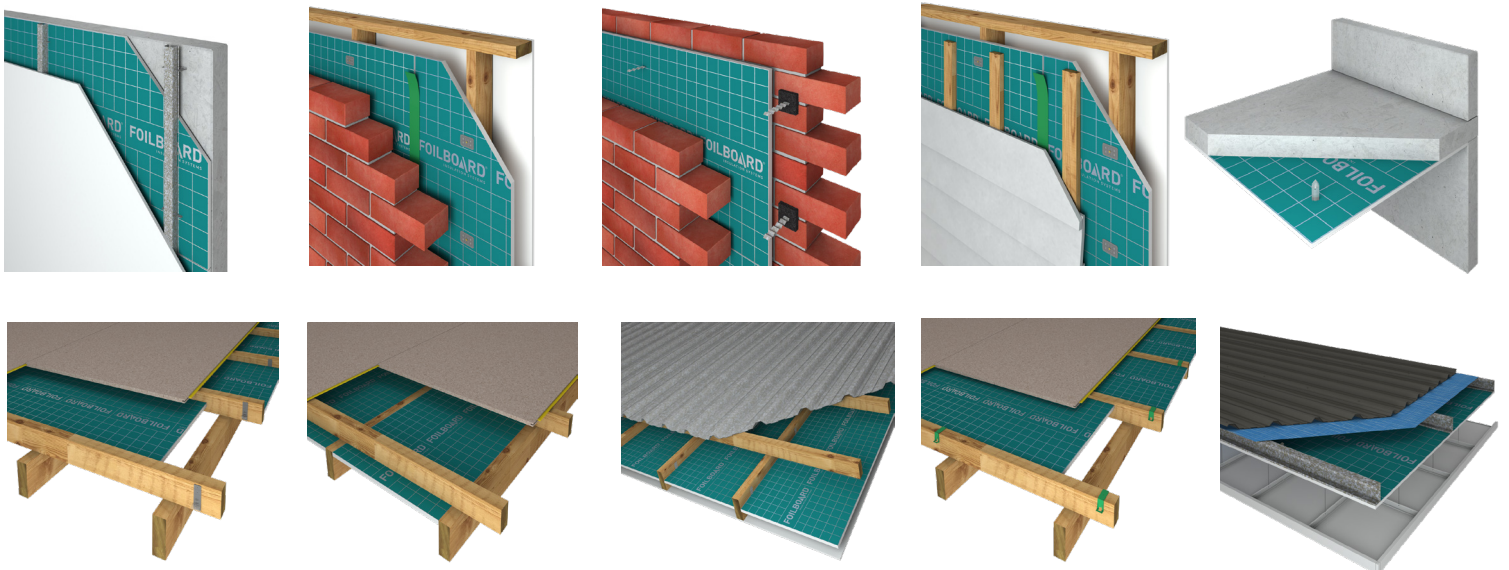


SPECIFICATIONS

	SM-30	SM-40	SM-50	SM-60	SM-70	SM-80	SM-100
Sheet Thickness (mm)	30	40	50	60	70	80	100
Sheet Size(mm)	2440X 1200	2440X 1200	2440X 1200	2440X 1200	2440X 1200	2440X 1200	2440X 1200
Weight (Kg)	1.2	1.6	2.0	2.4	2.8	3.2	4.0
Density (Kg/m3)	13.5	13.5	13.5	13.5	13.5	13.5	13.5
Grade	SL	SL	SL	SL	SL	SL	SL
Thermal Resistance (m ² K/W)	R0.8	R1.1	R1.2	R1.5	R1.8	R2.1	R2.4
Ozone Depleting Substances	0	0	0	0	0	0	0
VOC (Volatile Organic Compounds)	0	0	0	0	0	0	0

Slabmate is the new under slab insulation solution for slab on ground construction. Slabmate has been designed to create a thermal barrier adding to the total insulation of the project. Environmentally friendly, Slabmate is made here in Australia for both commercial and residential projects. Slabmate is lightweight, safe and easy to install and will maintain its R value for the life the building. Slabmate is the cost effective solution to increasing your buildings energy efficiency.

Foilboard by Foilboard

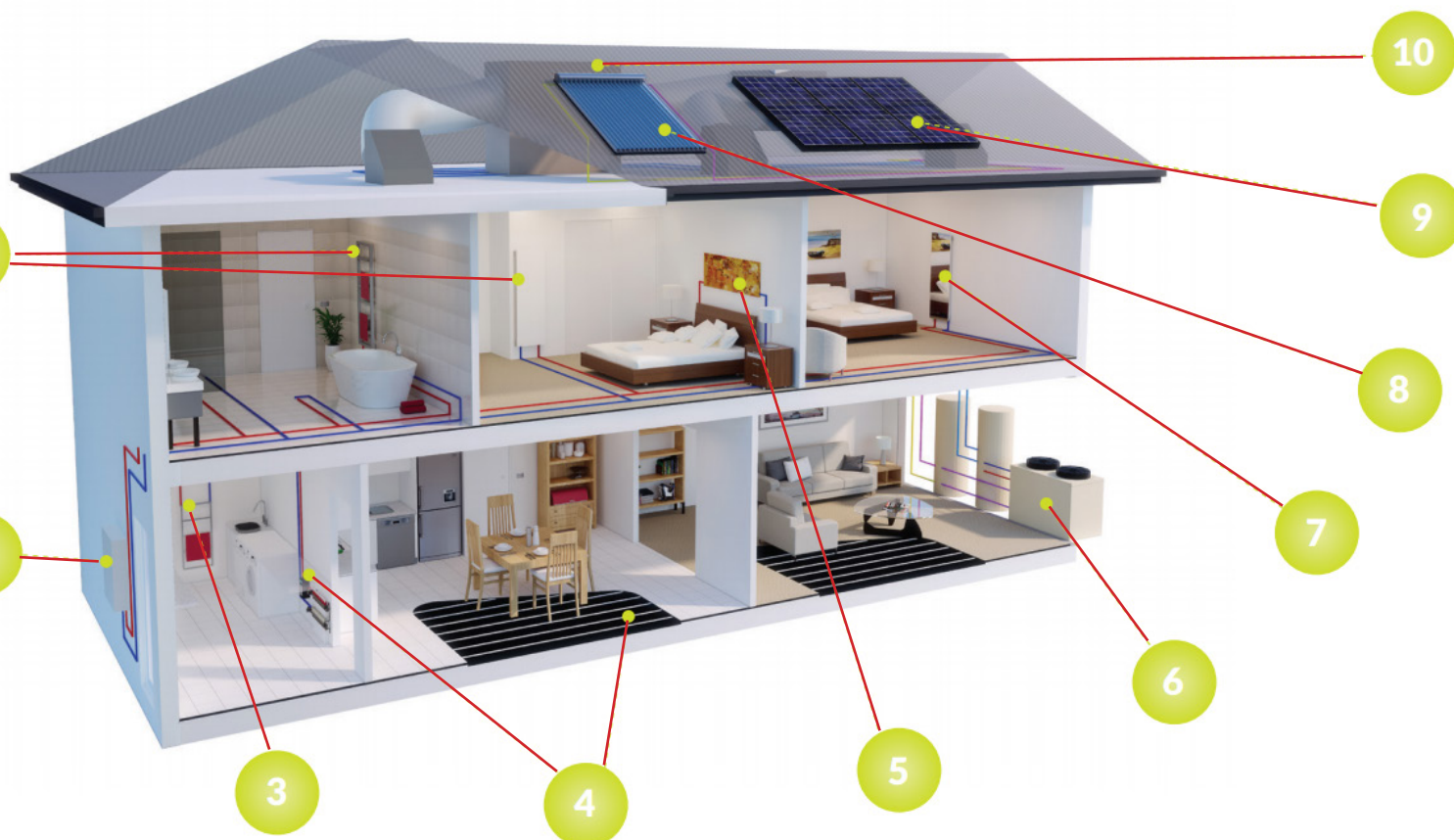


It's the rigid insulation panel for under your floors, in your walls, in your roof and even to line your man-caves & sheds. Manufactured in Australia from a fire retardant expanded polystyrene core (FR-EPS) with pure aluminium foil directly laminated to both sides, creating a SUPERIOR INSULANT, THERMAL BREAK and NON-PERMEABLE MOISTURE BARRIER. Foilboard® GREEN has been engineered and designed to ensure a quick and easy installation of a non-itchy, fibre free rigid insulation panel that will provide continuous thermal performance for the life of the building.

SOLAR HYDRONICS

A "Solar Hydronics System" is the combination of very powerful sustainable products. Solar Panels that generate electricity from the sun + Air Sourced Heat Pumps that make large volumes of energy efficient hot water taking their energy gain from the heat in our atmosphere. This hot water can then be used to provide your house with domestic hot water, pool / spa heating and hydronic heating.

Our "Eco Energy Systems" Division is able to provide and install solar panels. If you want to check our solar products please contact us



1

KORADO RADIATORS

Classic and designer radiators, towel warmers and convectors. Designed to provide ultimate comfort and cost

2

RADIANT BOILERS

Boilers and accessories. European innovative technology and reliability. Rated amongst the very best for running efficiency and cost savings

3

DESIGNER RADIATORS

Designer radiators and towel warmers, high end equipment focused on elegant design and heating efficiency to deliver this visually stunning and diverse range.

4

TIEMME

Pipe and fittings. Products created with the perfect mix of technical competence and top quality materials.

5

CREATE YOUR OWN

Create your own radiator panel design by providing an image or select from a wide range of existing images. These panels from Korado can be attached to existing classic style radiators and updated quickly and easily.

6

HYDRONIC HEAT PUMP

One of our selected brand heat pumps. Currently Rheem Stiebel Eltron or Ambient air.

8

SOLAR DOMESTIC HOT WATER AND HYDRONIC HEATING SOLUTIONS

Combines hydronic heating with the cost savings from solar hot water.

9

SOLAR PV PANELS

Harness the suns energy to improve the energy efficiency in your home and save on your energy bills.

10

HYDRONIC COOLING

Utilises the ambient air heat pump and options of underfloor cooling with ceiling fans or fan coil air conditioners and duct work to provide the perfect cooling solution.

MAKING YOUR HOUSE MORE SUSTAINABLE

Go beyond solar panels and see how some small changes can really add up when it comes to sustainability.

JIM MALO, REPORTER JAN 28, 2020

Homes with energy-saving features attract a price premium of as much as 10 per cent, new research shows.

A review of one Australian and other international studies by a research fellow at the Sustainable Buildings Research Centre at the University of Wollongong has revealed homes can sell for noticeably more if they have a higher energy saving rating.

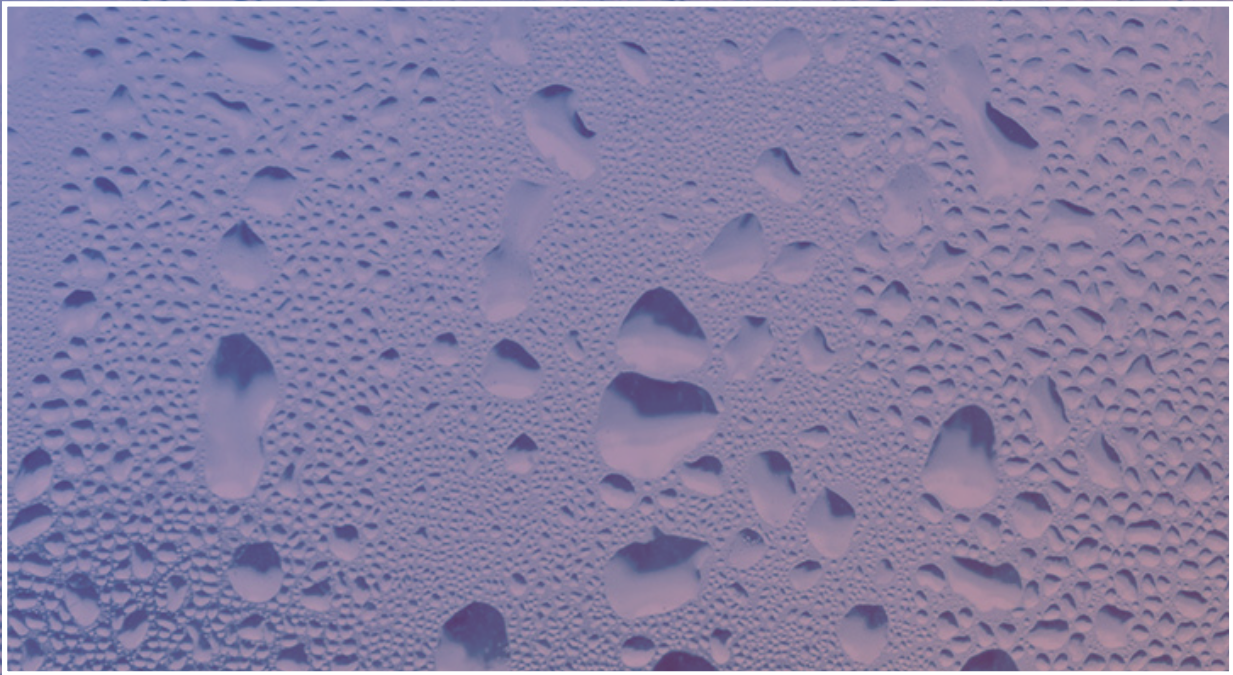
Researcher Daniel Daly said the price benefit to sellers showed there should be a requirement to disclose a home's energy rating, so those who had invested in the energy-saving features could reliably benefit from increased capital gains.

In the ACT, the only state or territory in Australia to require sellers to disclose their energy-efficiency rating, Dr Daly estimates sellers with a 7 NatHERs starhome could expect to take in \$72,721 more than a comparable 3-star home, based on a median price of \$773,635.

NatHERS, the Nationwide House Energy Rating Scheme, rates the energy efficiency of a home based on its design. Energy-saving features may include solar panels, insulation, double-glazed windows, draught sealing, batteries, rooms oriented to take advantage of sunlight or efficient heating.

Dr Daly said a disclosure scheme similar to that in the ACT should be adopted nationally. "We don't have a rating scheme for existing buildings," Dr Daly said. "There's no simple way that's regulated or verified by authorities. "For a seller, they may not be able to adequately communicate what they've done to improve a home to a buyer.

Contact



Supplier of



Products

ECO HYDRONIC SYSTEMS
A DIVISION OF AUSTRALIAN HYDRONICS
HEAD OFFICE | SHOWROOM | DISTRIBUTION
10 Frankston Gardens Drive Carrum Downs VIC 3201
03 9708 2600 | 1300 14 14 55
sales@australianhydronics.com.au
www.australianhydronics.com.au