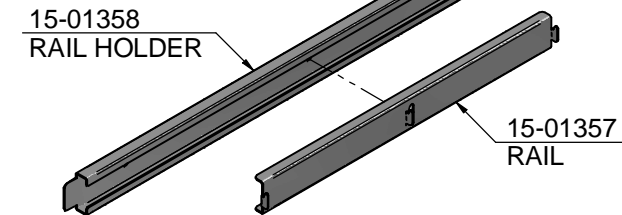

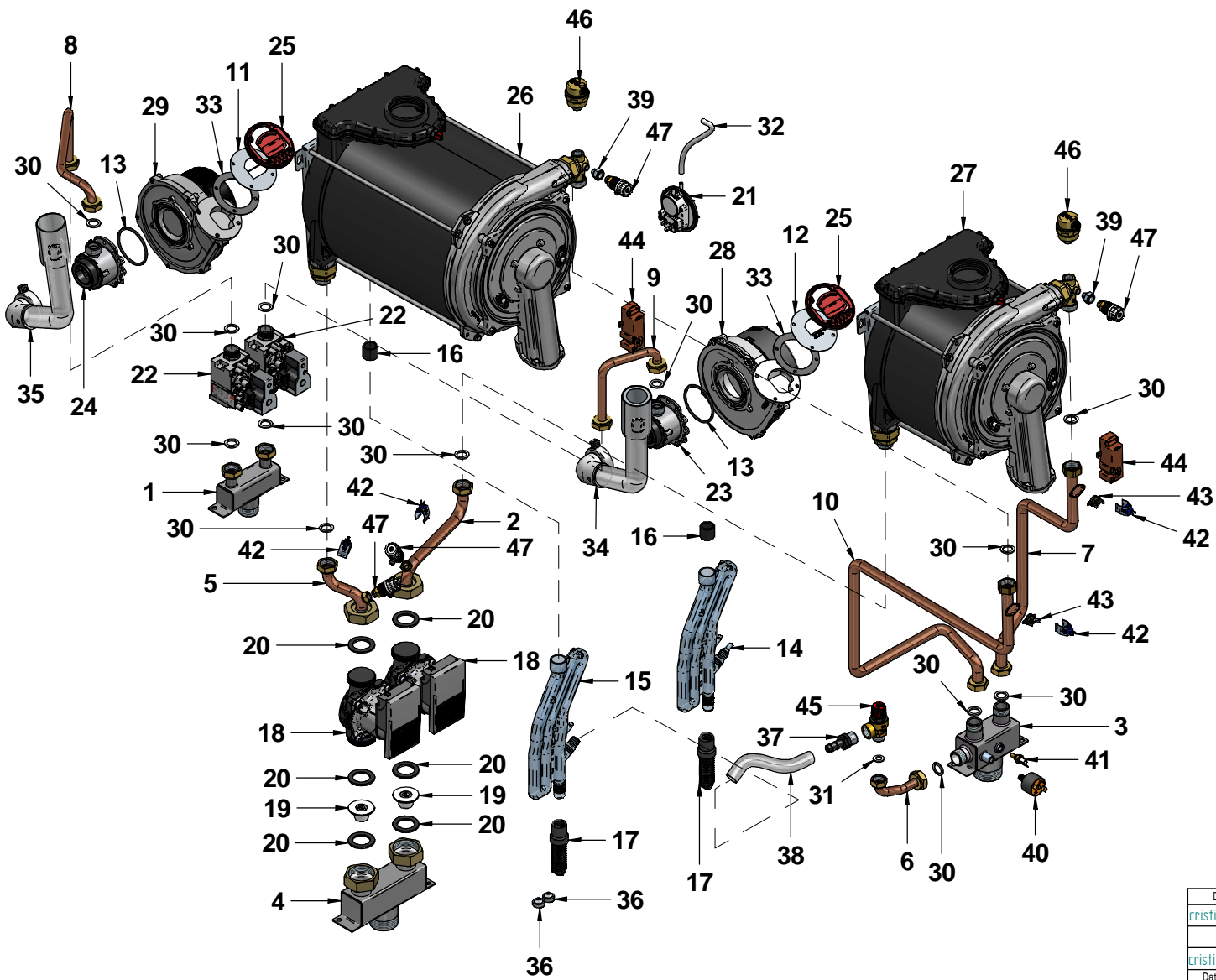


N°	Code	Description	Qty
1	12-01716	FRAME	1
2	15-00996	TRANSFORMER FIXING PLATE	1
3	15-01043	CONTROL PANEL LEFT SIDE BRACKET	1
4	15-01044	CONTROL PANEL RIGHT SIDE BRACKET	1
5	15-01078	CASING RIGHT SIDE PANEL	1
6	15-01079	CASING LEFT SIDE PANEL	1
7	15-01250	BURNER SUPPORT BRACKET	1
8	15-01337	WALL FIXING BRACKET	1
9	15-01348	ROOM-SEALED CHAMBER BOTTOM PLATE	1
10	15-01349	ROOM-SEALED CHAMBER TOP	1
11	15-01353	ROOM-SEALED CH.TOP REINFORCING BRACKET	2
12	15-01354	SPACER	1
13	15-01363	SLAVE CONTROL PANEL LEFT SIDE BRACKET -	1
14	15-01364	SLAVE CONTROL PANEL RIGHT SIDE BRACKET	1
15	15-01461	CONDENSATE TRAP SUPPORT BRACKET	2
16	15-01462	ROOM-SEALED CH.TOP REINFORCING LEFT SIDE	1
17	15-01763	TRANSFORMER-AIR PRESSURE SWITCH FIXING	1
18	35-00091	INSULATION CASING SIDE PANELS	2
19	35-00128	CASING FRONT PANEL	1
20	35-00143	INSULATION FRONT PANEL	1
21	35-00145	INSULATION TOP PANEL	1
22	35-00146	LEFT MANIFOLD INSULATION	1
23	35-00147	RIGHT MANIFOLD INSULATION	1
24	35-00148	GAS MANIFOLD INSULATION	1

12-01733
RAILING KIT
 to be supplied
 in case of cascades




Disegnatore	Rev.	data revisione	Autore revisione	Descrizione revisione
crislian.pazzagliani				
Modificato				
crislian.pazzagliani				
Data di creazione	Scala	Materiale	Sp.	Peso (Kg)
14/01/2019	165			1598
Note				
Descrizione completa R1K 75 "POWER-TECH" ERP SK.2 MET AUS - CS R2				
 tecnologia nel calore dal 1959				Codice A501A182C801
				Revisione 00



N°	Code	Description	Qty
1	12-01715	GAS VALVES MANIFOLD	1
2	12-01727	PIPE Ø18 - HEAT EXCHANGER 2	1
3	12-01865	HEATING FLOW MANIFOLD	1
4	12-01866	HEATING RETURN MANIFOLD	1
5	12-01873	PIPE Ø18 - HEAT EXCHANGER LEFT SIDE	1
6	12-01905	PIPE Ø14 SAFETY VALVE	1
7	12-01960	PIPE Ø18 HTG FLOW - HEAT EXCHANGER 2	1
8	12-02203	PIPE Ø14 GAS VALVE	1
9	12-02306	PIPE Ø14 GAS VALVE - HEAT EXCHANGER 2	1
10	12-02477	PIPE Ø18 EXCHANGER 1 HTG FLOW	1
11	15-01624	BURNER FLANGE 34+50 KW SK.3	1
12	15-01805	BURNER FLANGE	1
13	25-00386	O-RING 62,00x3 VENTURI	2
14	25-00520	CONDENSATE TRAP/SIPHON IN PP - CLOSED	1
15	25-00525	CONDENSATE TRAP/SIPHON IN PP	1
16	25-00526	CONDENSATE DRAIN TERMINAL	2
17	25-00527	CONDENSATE DRAIN PIPE	2
18	25-00529	PUMP YONOSPORA RS25/7.5-130-PW M1	2
19	25-00530	NON-RETURN VALVE 1"1/2	2
20	25-00531	WASHER 1"1/2 EPDM	6
21	30-00024	AIR PRESSURE SWITCH 3.28 - 2.98	1
22	30-00134	GAS VALVE - SIT 848 SIGMA	2
23	30-00166	NATURAL GAS VENTURI	1
24	30-00214	VENTURI NAT.GAS	1
25	30-00286	FLANGE WASHER WITH CLAPET	2
26	30-00334	RADIANT EXCHANGER SK1.2 50 MONOTHERMIC	1
27	30-00341	RADIANT EXCHANGER SK 1.2 28 MONOTHERMIC	1
28	40-00180	FAN PX128/2031	1
29	40-00244	EXHAUST FAN RG128/1300	1
30	43001LA	WASHER Ø 23.5x17x2 3/4" - AFM34	13
31	43002LA	WASHER Ø 18.5x10.2x2 1/2" - AFM34	1
32	43018LA	SYLICON/TRANSPARENT PIPE Ø 8x4	1
33	43278LA	FLANGE WASHER D.82 EPDM	2
34	50-00395	AIR INTAKE TUBE	1
35	50-00397	AIR INTAKE PIPE - LEFT MOUNTING	1
36	55-00313	METRIC SNAP-FIT GROMMETS	2
37	55-00355	RUBBER.HOLDER 1/2"x16	1
38	55-00356	ANTIFREEZE PIPE Ø14x19R2K - 0133050183800	1
39	56048LA	ADAPTER 2520 1/8-1/4	2
40	59015LA	WATER PRESSURE SWITCH PC5411	1
41	73507LA	WHITE SENSOR 1/8"	1
42	73516LA	HTG CLIP SENSOR X PIPE 17/18mm BLUE	4
43	86006LA	SAFETY THERMOSTAT 95gr(ø)E.	2
44	88023LA	IGN.TRANSFORMER AC 230VAC50-60HZ	2
45	96005LA	SAFETY VALVE 1/2" 3 bar	1
46	96012LA	AUTOMATIC AIR VENT VALVE 3/8"	2
47	96055LA	AIR VENT VALVE 1/4 METAL	4

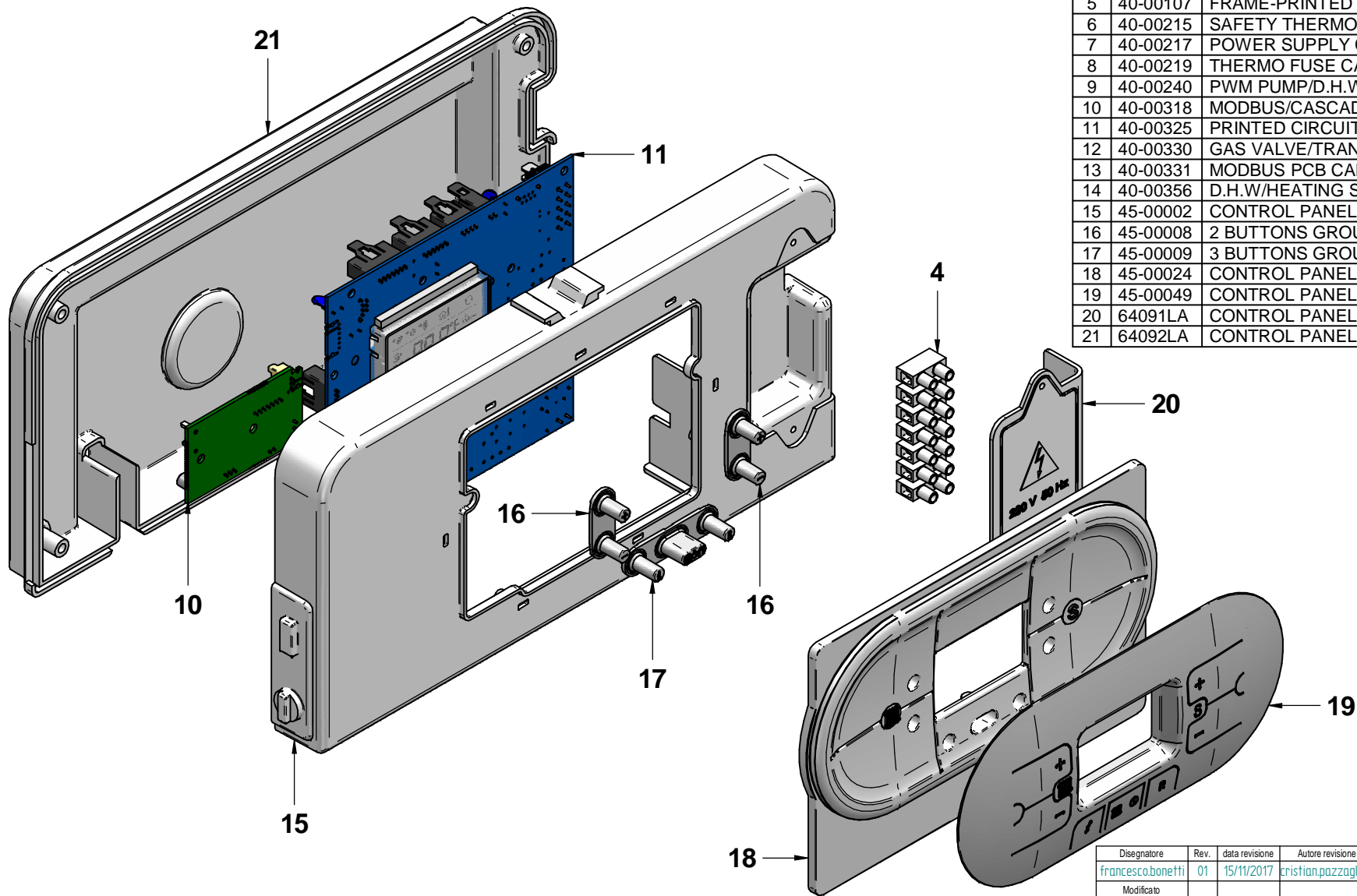
Disegnatore	Rev.	data revisione	Autore revisione	Descrizione revisione
cristian.pazzagli				
Modificato				
cristian.pazzagli				
Data di creazione	Scala	Materiale	Sp.	Peso (Kg)
14/01/2019	1:7.5			47.451
Note				
Descrizione completa				
R1K 75 "POWER-TECH" ERP SK.2 MET				
AUS - CS R2				



tecnologia nel calore dal 1959

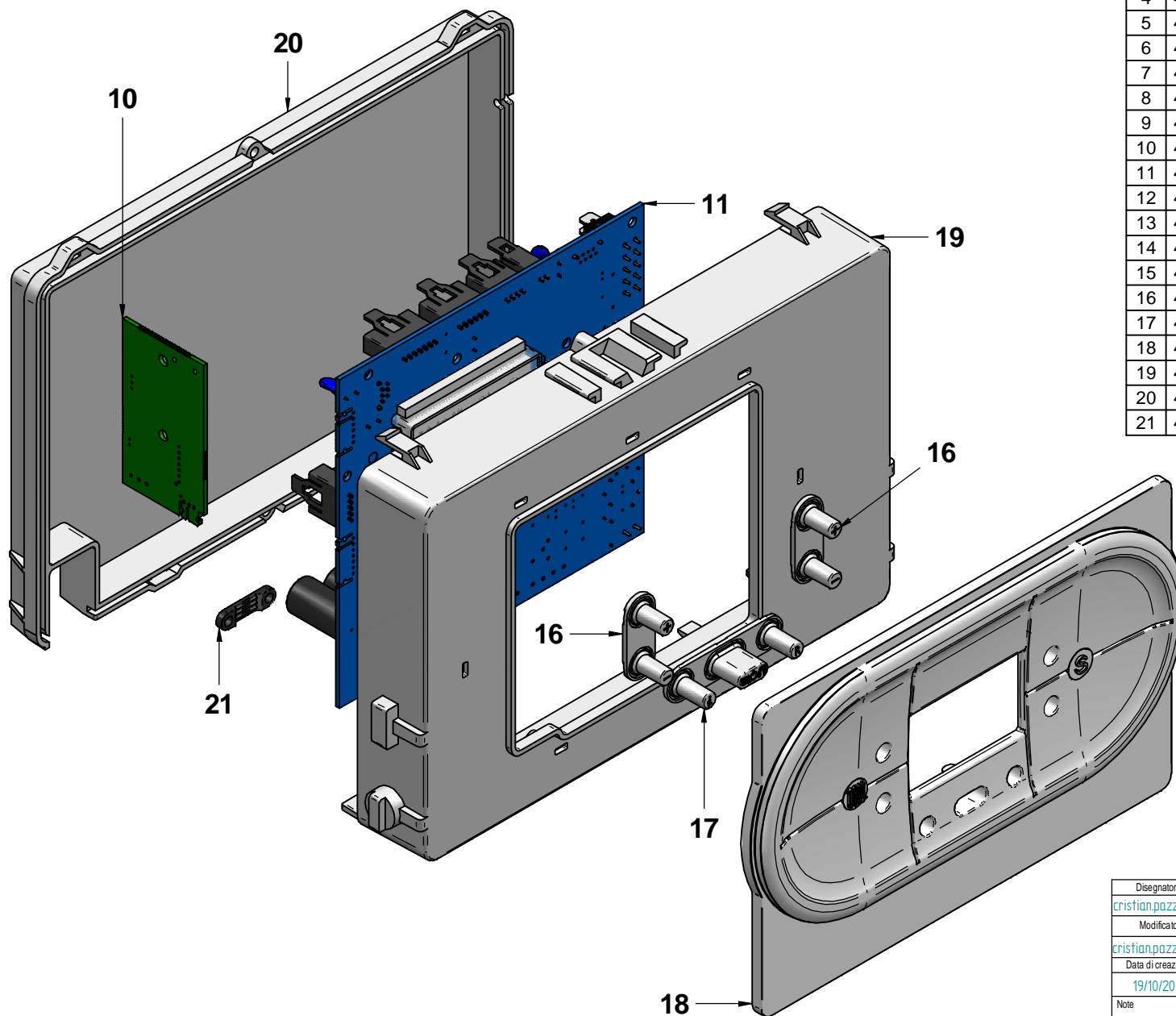
Codice Revisione

A501A182C801 **00**



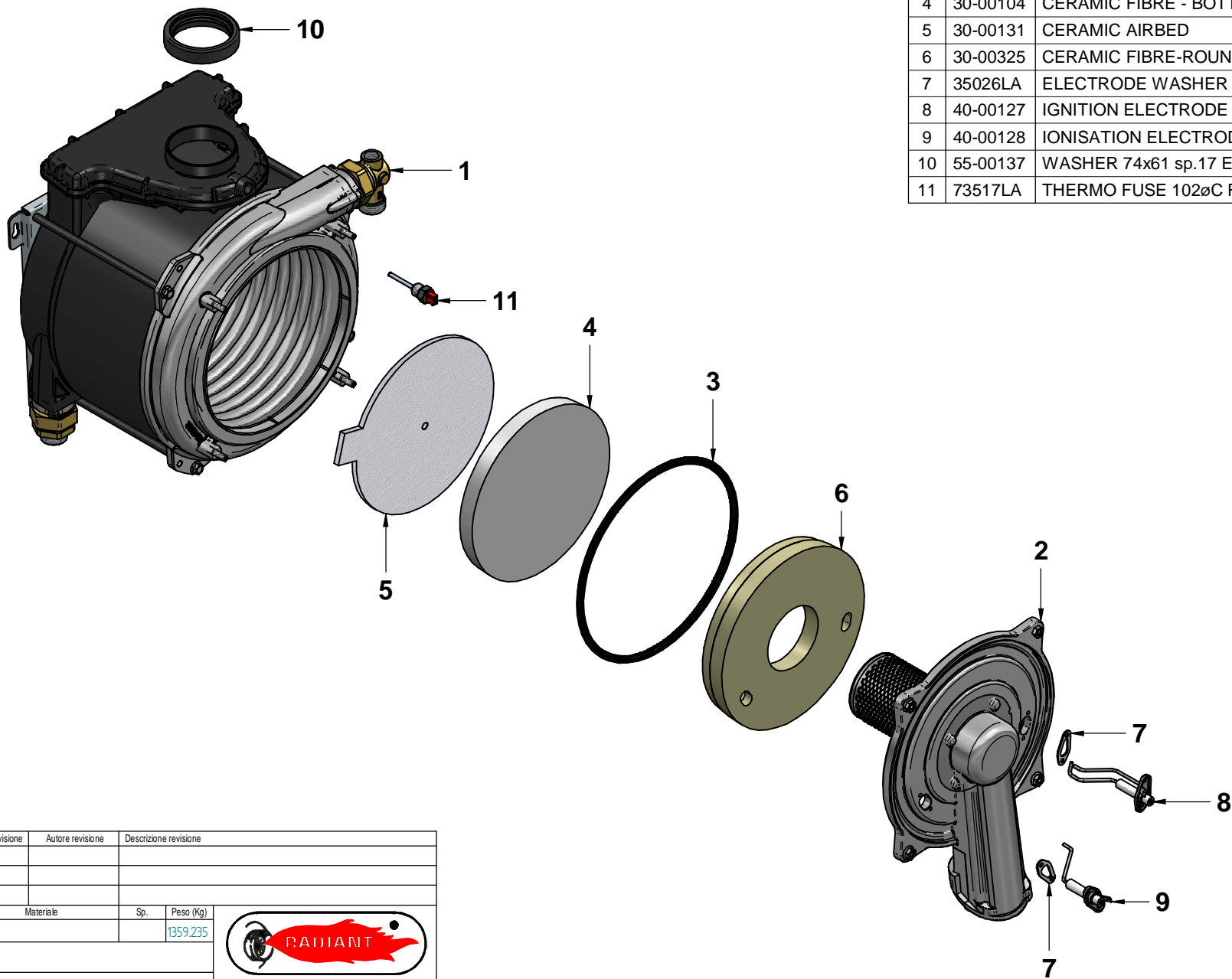
N°	Code	Description	Qt.
1	31380LA	EXHAUST FAN CABLE	1
2	31414LA	PUMP CABLE	1
3	40-00097	WATER PRESSURE SWITCH CABLE	1
4	40-00103	POWER SUPPLY CABLE	1
5	40-00107	FRAME-PRINTED CIRCUIT BOARD CABLE	1
6	40-00215	SAFETY THERMOSTAT CABLE	1
7	40-00217	POWER SUPPLY CABLE/EXHAUST FAN CABLE	1
8	40-00219	THERMO FUSE CABLE	1
9	40-00240	PWM PUMP/D.H.W. SENSOR CABLE	1
10	40-00318	MODBUS/CASCADE SYSTEMS INTERFACE PCB	1
11	40-00325	PRINTED CIRCUIT BOARD R2 PANEL	1
12	40-00330	GAS VALVE/TRANSFORMER CABLE -	1
13	40-00331	MODBUS PCB CABLE	1
14	40-00356	D.H.W/HEATING SENSOR CABLE	1
15	45-00002	CONTROL PANEL R1	1
16	45-00008	2 BUTTONS GROUP R2 PANEL	2
17	45-00009	3 BUTTONS GROUP R2 PANEL	1
18	45-00024	CONTROL PANEL FRONT COVER	1
19	45-00049	CONTROL PANEL COVER R1K GRAY	1
20	64091LA	CONTROL PANEL TERMINAL BOARD COVER OBLO'	1
21	64092LA	CONTROL PANEL BACK PLATE OBLO'	1

Disegnatore	Rev.	data revisione	Autore revisione	Descrizione revisione
francesco.bonetti	01	15/11/2017	cristian.pazzaglini	41-00218 sostituito con 31380LA
Modificato				
cristian.pazzaglini				
Data di creazione	Scala	Materiale	Sp.	Peso (Kg)
20/11/2015	1:1.8			376.380
Note				
Descrizione completa CONTROL PANEL COMPLETE MASTER R1K 100				
 tecnologia nel calore dal 1959				Revisione
				01
Codice				41-00175




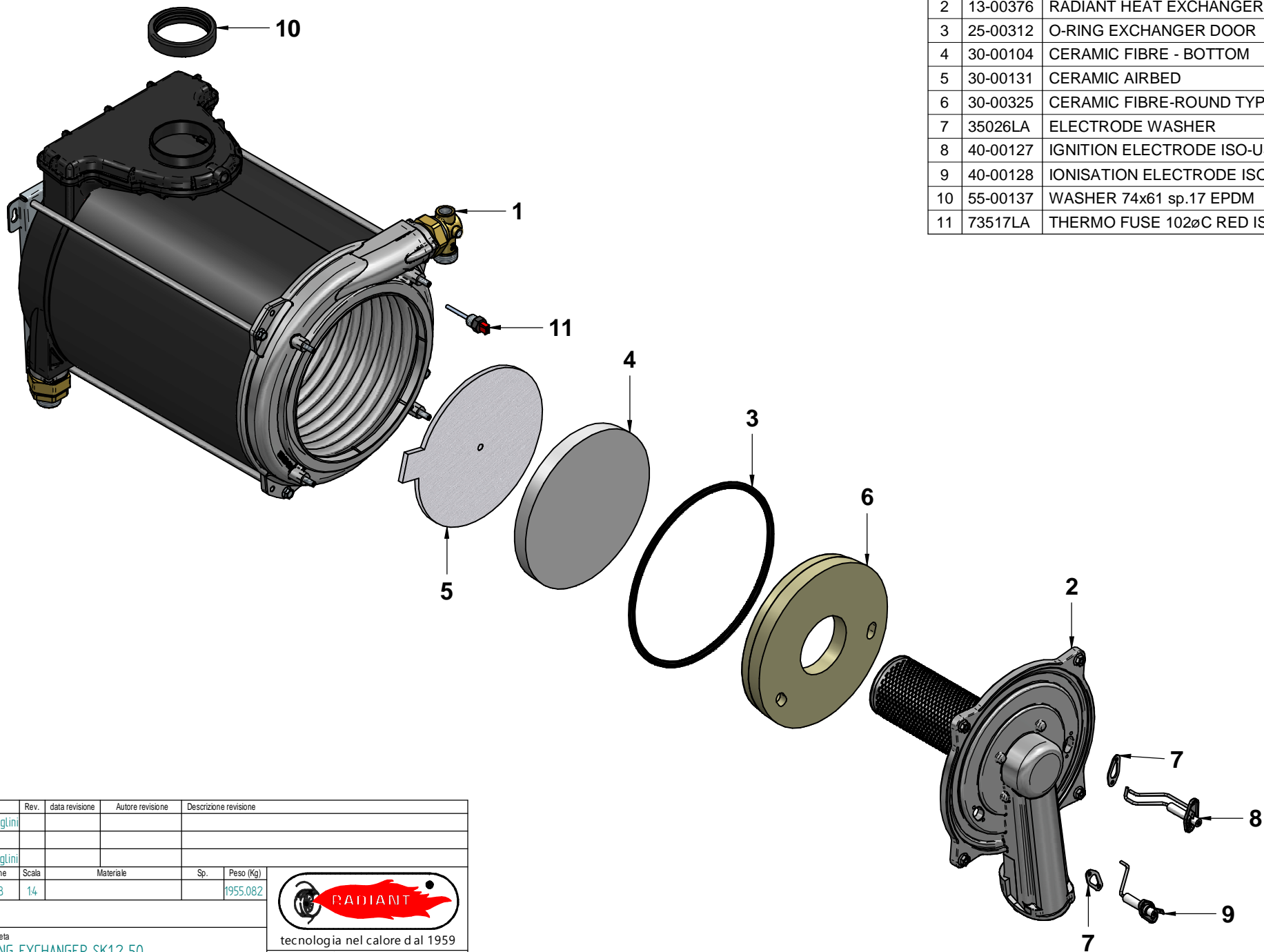
N°	Code	Description	Qty
1	31352LA	D.H.W SENSOR CABLE	1
2	31370LA	PUMP CABLE	1
3	31380LA	EXHAUST FAN CABLE	1
4	40-00097	WATER PRESSURE SWITCH CABLE	1
5	40-00107	FRAME-PRINTED CIRCUIT BOARD CABLE	1
6	40-00215	SAFETY THERMOSTAT CABLE	1
7	40-00217	POWER SUPPLY/FAN CABLE	1
8	40-00219	THERMO FUSE CABLE	1
9	40-00240	PWM PUMP / RETURN SENSOR CABLE	1
10	40-00318	MODBUS/CASCADE SYSTEMS INTERFACE	1
11	40-00325	PRINTED CIRCUIT BOARD R2 PANEL	1
12	40-00329	POWER SUPPLY CABLE SLAVE PCB	1
13	40-00330	GAS VALVE/TRANSFORMER CABLE -	1
14	40-00331	MODBUS PCB CABLE	1
15	40-00332	MASTER/SLAVE PCBs CONNECTING CABLE	1
16	45-00008	RUBBER BUTTON "+/-"	2
17	45-00009	RUBBER BUTTON "DHW/ON/HTG"	1
18	45-00024	INSTRUMENT PANEL - OVAL	1
19	45-00032	CONTROL PANEL FRONTAL COVER R5	1
20	45-00033	CONTROL PANEL BACK PLATE	1
21	45-00051	CONTROL PANEL TERMINAL FIXING CLAMP -	1

Disegnatore	Rev.	data revisione	Autore revisione	Descrizione revisione
cristian.pazzaglini				
Modificato				
cristian.pazzaglini				
Data di creazione	Scala	Materiale	Sp.	Peso (Kg)
19/10/2018	1:15			398.524
Note				
Descrizione completa CONTROL PANEL COMPLETE SLAVE SEAL 75-100 ITALKERO				
				Revisione
				00
tecnologia nel calore dal 1959				Codice 41-00303




N°	Code	Description	Qty
1	13-00292	RADIANT HEAT EXCHANGER BACK PANEL	1
2	13-00374	RADIANT HEAT EXCHANGER FRONT PANEL	1
3	25-00312	O-RING EXCHANGER DOOR	1
4	30-00104	CERAMIC FIBRE - BOTTOM	1
5	30-00131	CERAMIC AIRBED	1
6	30-00325	CERAMIC FIBRE-ROUND TYPE 30SP.	1
7	35026LA	ELECTRODE WASHER	2
8	40-00127	IGNITION ELECTRODE ISO-USA.w/CABLE	1
9	40-00128	IONISATION ELECTRODE ISO-USA w/CABLE	1
10	55-00137	WASHER 74x61 sp.17 EPDM	1
11	73517LA	THERMO FUSE 102°C RED ISOTHERM. 1/4"	1

Disegnatore	Rev.	data revisione	Autore revisione	Descrizione revisione
cristian.pazzaglini				
Modificato				
cristian.pazzaglini				
Data di creazione	Scala	Materiale	Sp.	Peso (Kg)
07/03/2018	14			1359.235
Note				
Descrizione completa				
CONDENSING EXCHANGER RADIANT SK1.2 28 SFK				
		tecnologia nel calore d al 1959		
		Codice 30-00332	Revisione 00	



N°	Code	Description	Qty
1	13-00355	RADIANT HEAT EXCHANGER BACK PANEL	1
2	13-00376	RADIANT HEAT EXCHANGER FRONT PANEL	1
3	25-00312	O-RING EXCHANGER DOOR	1
4	30-00104	CERAMIC FIBRE - BOTTOM	1
5	30-00131	CERAMIC AIRBED	1
6	30-00325	CERAMIC FIBRE-ROUND TYPE 30SP.	1
7	35026LA	ELECTRODE WASHER	2
8	40-00127	IGNITION ELECTRODE ISO-USA.w/CABLE	1
9	40-00128	IONISATION ELECTRODE ISO-USA w/CABLE	1
10	55-00137	WASHER 74x61 sp.17 EPDM	1
11	73517LA	THERMO FUSE 102øC RED ISOTHERM. 1/4"	1

Disegnatore	Rev.	data revisione	Autore revisione	Descrizione revisione
cristian.pazzaglini				
Modificato				
cristian.pazzaglini				
Data di creazione	Scala	Materiale	Sp.	Peso (Kg)
07/03/2018	14			1955.082
Note				
Descrizione completa				
CONDENSING EXCHANGER SK12 50				
 tecnologia nel calore d al 1959				
Codice			Revisione	
30-00334			00	

OGNI TECNICO E' PUGNATO NON SOLO INFORMATO, MA ANCHE IN DIRITTO DI INDAGARE, INDAGANDO SULLA VERIDICITA' DELLE INFORMAZIONI FORNITE, SULLA RESPONSABILITA' DEI CONTROLLI REALIZZATI. CONTINUARE NEL PRESENTE ESPlicitO SE DENUNTE AL TERZO O DI TRANSCURRERE TUTTI I DIRITTI COME PRESENTI, NESSUNA PARTE DI QUESTO DOCUMENTO PUO' ESSERE RIPRODOTTA, FOTOCOPIATA, IN UNO DEI SISTEMI DI TRAMANDA, IN QUALSIASI FORMA O METODO ELETTRONICO, MECCANICO, FOTOCOPIA O ALTRA SPECIE, SENZA LA PRECEDENTE AUTORIZZAZIONE DELLA DITTA.