



## Wall mounted gas condensing boilers:

# VITODENS 100-W

(type B1HF/B1KF)



As a large-volume manufacturer with many years of experience in wall mounted boilers, we know what's important. With our entire product range, including the Vitodens 100-W, you can rely on Viessmann product quality. That's why Viessmann wall mounted boilers are not only renowned for innovative performance, but also for reliability and longevity too. Thanks to modern construction methods, gas condensing wall mounted boilers are extremely compact and can also be installed in small spaces. Lateral service clearances are not required, all connections are easily accessible from the front.

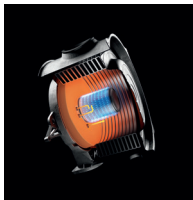
This makes the Vitodens wall mounted boilers ideally suited for all domestic properties.

## Viessmann Australia Warranty Details

<b>10</b> YEARS	<b>Radial Heat Exchanger</b>	<b>2</b> YEARS	<b>Labour</b>	<b>2</b> YEARS	<b>Components*</b>
--------------------	------------------------------	-------------------	---------------	-------------------	--------------------

\*Boiler Components Warranty can extend to 5 years when connected to the internet and serviced annually by an approved Viessmann Australia technician.

## Features and Benefits



### MatriX Plus burner: The heart of your heating system

The MatriX Plus burner excels in efficiency, low pollutant and noise emissions. Its special stainless steel MatriX surface is resistant to high temperatures, ensuring reliable performance and longevity.



### Easy operation with detailed display

The system's new electronic control platform features a sleek "black panel" design and user-friendly LCD touchscreen display. With intuitive operation, it offers convenient control over both direct and mixed heating circuits.



### Radial heat exchanger: High quality stainless steel is both efficient and durable

The stainless steel Radial heat exchanger in the Vitodens 100-W is corrosion resistant and highly efficient, converting energy into heat with exceptional durability and quality.



### Energy saving, comfort and safety with ViCare

Vitodens wall mounted gas condensing boilers now have built-in WiFi for internet connectivity. The ViCare app offers easy control, real-time remote monitoring, and energy-saving features. Compatible with iOS and Android.

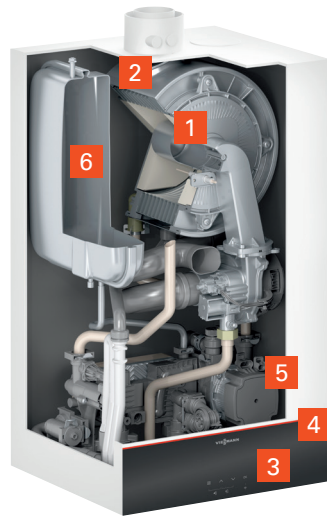


## About VISSMANN

Viessmann, founded in 1917 in Allendorf, Germany, is a leading provider of sustainable climate and renewable energy solutions, Viessmann operates in 74 countries. With a strong emphasis on safety, user-friendliness, high-quality design, and durability, Viessmann has built a modern and integrated ecosystem of solutions, leveraging its German heritage and industry leadership.



# Technical Details



## VITODENS 100-W

(Type B1HF)

- 1** MatriX Plus burner with Lambda Pro combustion control system
- 2** Inox-Radial heat exchanger
- 3** LCD touchscreen display
- 4** WiFi inside
- 5** High-efficiency pump
- 6** Expansion vessel (8 litres)

### VITODENS 100-W

		B1KF-19	B1HF-25	B1KF-25	B1HF-32	B1KF-32
<b>Model Code</b>						
<b>Installation</b>	(Internal/External)	Yes/Yes with Cover	Yes/Yes with Cover	Yes/Yes with Cover	Yes/Yes with Cover	Yes/Yes with Cover
<b>Nominal Gas Consumption</b>	MJ/h	98.3	84.2	114.1	107.6	125.6
<b>Minimum Gas Consumption</b>	MJ/h	98.3	84.2	114.1	107.6	125.6
<b>Maximum Working Gas Pressure (NG)</b>	kPa	1.13	1.13	1.13	1.13	1.13
<b>Maximum Working Gas Pressure (LPG)</b>	kPa	2.75	2.75	2.75	2.75	2.75
<b>Maximum Heat Output (80/60°C)</b>	kW	17.5	23	23	29.3	29.3
<b>Minimum Heat Output (80/60°C)</b>	kW	2.9	2.9	2.9	2.9	2.9
<b>Maximum Heat Output (50/30°C)</b>	kW	19	25	25	32	32
<b>Minimum Heat Output (50/30°C)</b>	kW	2.9	3.2	3.2	3.2	3.2
<b>Maximum Efficiency (Nominal)</b>	%	98	98	98	98	98
<b>Heating Water Circuit Pressure (Heating)</b>	kPa	300	300	300	300	300
<b>Min-Max Water Circuit Pressure (DHW)</b>	kPa	100/1,000	N/A	100/1,000	N/A	100/1,000
<b>Water Heating Capacity</b>	L/min	13.4	N/A	15.7	N/A	17
<b>Modulation Turndown Ratio</b>		1:10	1:10	1:10	1:10	1:10
<b>Expansion Tank Capacity</b>	L	8		8		
<b>Co-axial Flue System Connection</b>	mm/mm	60/100	60/100	60/100	60/100	60/100
<b>Power Consumption</b>	W	45	67	64	113	110
<b>Dimension (In DxWxH)/(Ext. with Cover DxWxH)</b>	mm	360x400x700 / 388x500x1100	360x400x700 / 388x500x1100	360x400x700 / 388x500x1100	360x400x700 / 388x500x1100	360x400x700 / 388x500x1100
<b>Dry Weight</b>	kg	35	32	35	32	35
<b>Power Supply</b>	(V/ph/Hz)	240/1/50	240/1/50	240/1/50	240/1/50	240/1/50
<b>Sound Power Level</b>	dB (A)	49.1	46.1	50	48.4	50.4

Copyright Viessmann.  
 Duplication and alternative use only with prior written consent.  
 Subject to technical modifications.

Viessmann Australia Pty Ltd  
 Office 18, 15 Cochrans Road,  
 Moorabbin, Melbourne, Australia, 3189

www.viessmann.com.au

info.australia@viessmann.com  
 1300 734 170

Service email address: service@viessmann.au

